

PART OF SECTIONS 28, 29, 32 & 33, T.7N., R.1E., S.L.B. & M.

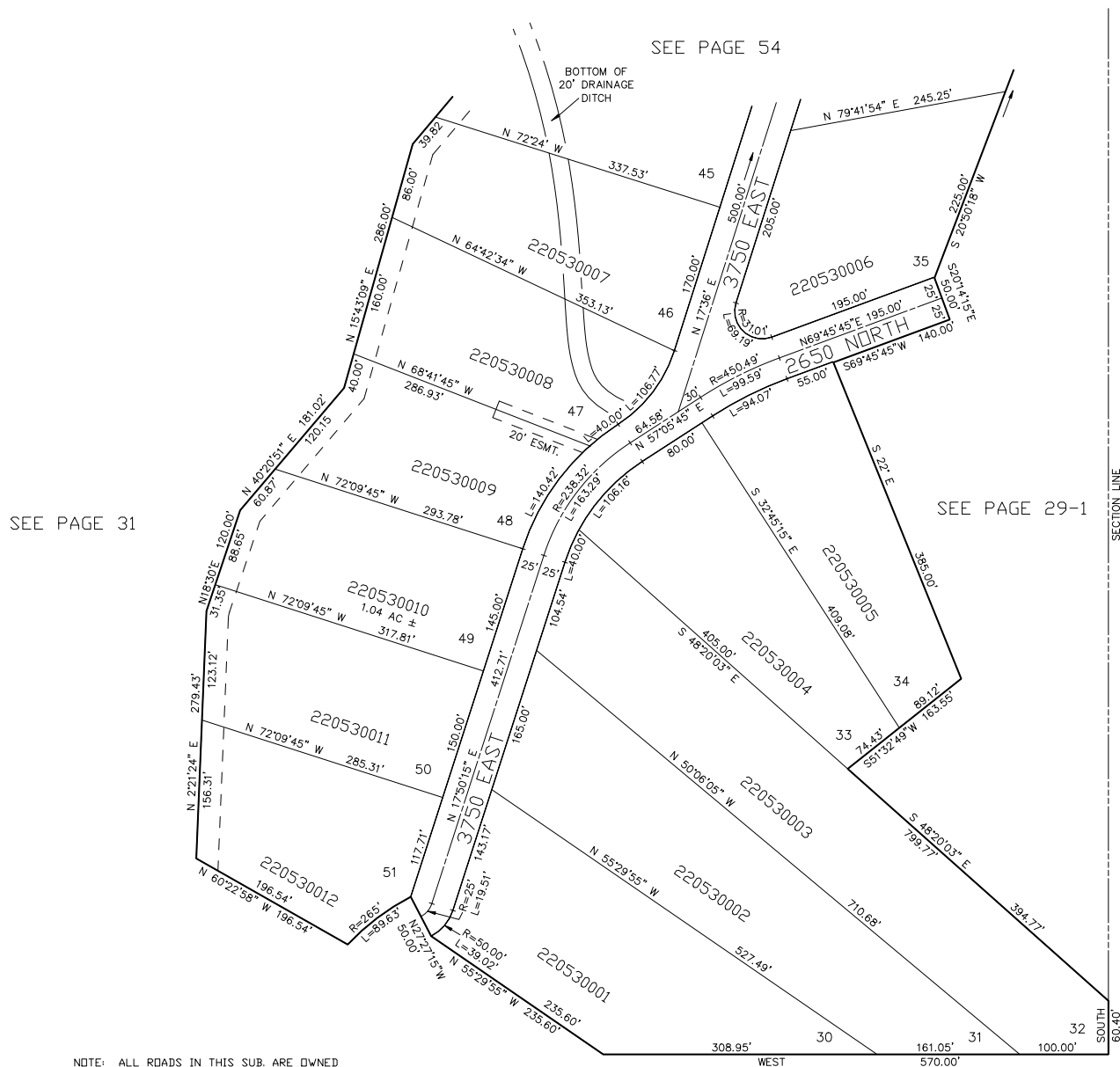
NORDIC VALLEY ESTATES NO. 2

LOTS 30-35 & 46-51

IN WEBER COUNTY

SCALE 1" = 100'

TAXING UNIT: 317



NOTE: ALL ROADS IN THIS SUB. ARE OWNED BY WEBER COUNTY SEE 22-030-0018

25' UTILITY & DRAINAGE EASEMENTS EACH SIDE OF PROPERTY LINES AS INDICATED BY DASHED LINES EXCEPT AS OTHERWISE SHOWN.

FOR COMPLETE ENG DATA SEE ORIGINAL DEDICATION PLAT IN BOOK 16, PAGE 40 OF RECORDS.

SEE PAGE 30